

**TITLE: POLICY DESCRIBING THE FACILITY OWNERSHIP AND
MAINTENANCE RESPONSIBILITIES FOR THE VARIOUS MEANS
OF PROVIDING ELECTRICAL SERVICE**

Effective Date: 8/11/09

Adopted by Board: 8/11/09
Revised by Board: _____

Certified by: 

The Wallingford Electric Division (WED) provides electric service to its customers via various physical configurations, each of which has unique provisions regarding the ownership and maintenance of the electric service facilities.

The purpose of this Policy is to describe and codify these ownership and maintenance responsibilities for most of the typical electric service configurations. This Policy recognizes that there may be instances and situations that do not precisely conform to any of the various electric service configurations described herein. In these cases, the General Manager or his designee shall, before permanent service is established, determine which portions of the service facilities are to be owned and/or maintained by the customer, and which by the WED.

Overhead Services

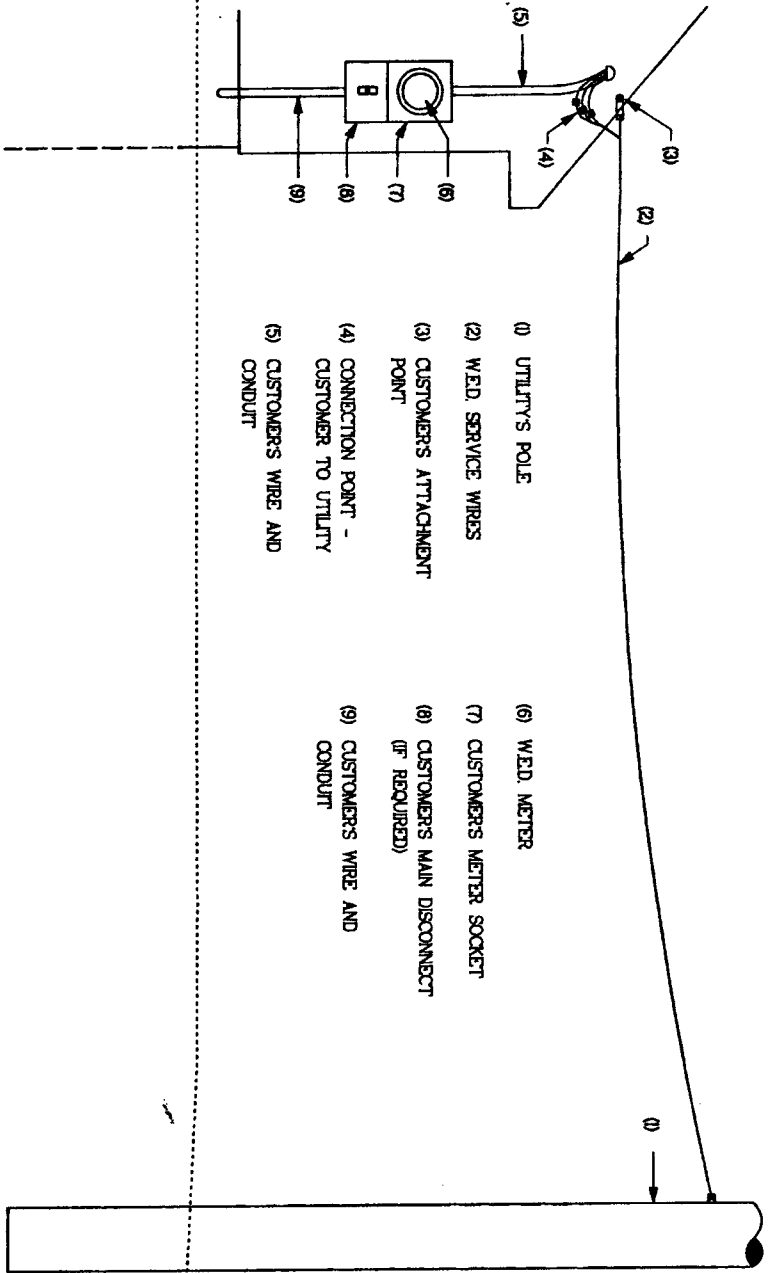
Nearly all overhead services (residential, commercial, and industrial) at secondary voltages (less than 600-volts) can be described by the attached drawing OH 001. The WED owns the overhead service wires, and the customer owns the physical attachment point where the WED's wires attach to the customer's building. The electrical "point of demarcation" between the WED and the customer is the connectors between the WED's service wires and the customer's wiring. The only item that the WED owns and maintains beyond these connectors is the meter.

Customers taking overhead service at primary voltage (13,800-volts) shall be metered at the primary voltage. Attached drawing OH 002 illustrates a typical primary overhead service facility, including the metering. In this drawing, the WED owns everything to the left of item (3), the customer's physical connection to the WED's overhead primary system. The customer owns and maintains its electric distribution facilities from this point.

Underground Services

Underground service arrangements are much more varied than overhead services. Underground services can, however, be described by four basic configurations.

1. Underground services at secondary voltages (less than 600-volts) supplied from WED overhead facilities (see attached drawings UG 001 and UG 002). In these instances, the WED owns the connectors that attach the customer's underground cables to the WED's overhead wires, and the meter. The customer owns and maintains all other electric service facilities.
2. Underground services at secondary voltages (less than 600-volts) supplied from WED underground facilities (see attached drawings UG 003 through UG 008). In these instances, the WED owns and maintains the underground service facilities up to and including the last point of connection before the customer's meter. From this point of connection to the customer's building, the customer owns and maintains all of the underground service facilities, excluding the meter. It should be noted that, depending on the specific configuration of an underground service, the customer may be responsible for providing and/or installing some of the underground service facilities that will be owned and maintained by the WED. These specific provision and/or ownership responsibilities are noted on the above-listed drawings.
3. Underground services at primary voltages (13.8-kV) supplied from WED overhead facilities (see attached drawings UG 009 through UG 011). In these instances, the customer always owns and maintains all facilities from the bottom (load side) of the WED's fused cutouts to the customer's building, except for the meter, and in some cases the transformer. The WED does not own any primary voltage underground service facilities supplied directly from WED primary overhead lines.
4. Underground services at primary voltages (13.8-kV) supplied from WED underground facilities (see attached drawing UG 012). In these cases, the customer owns the underground distribution facilities from the WED manhole, vault, splice box or junction pedestal (sectionalizing device) to its facilities. The WED owns the underground distribution facilities that supply the sectionalizing device, as well as the device itself.

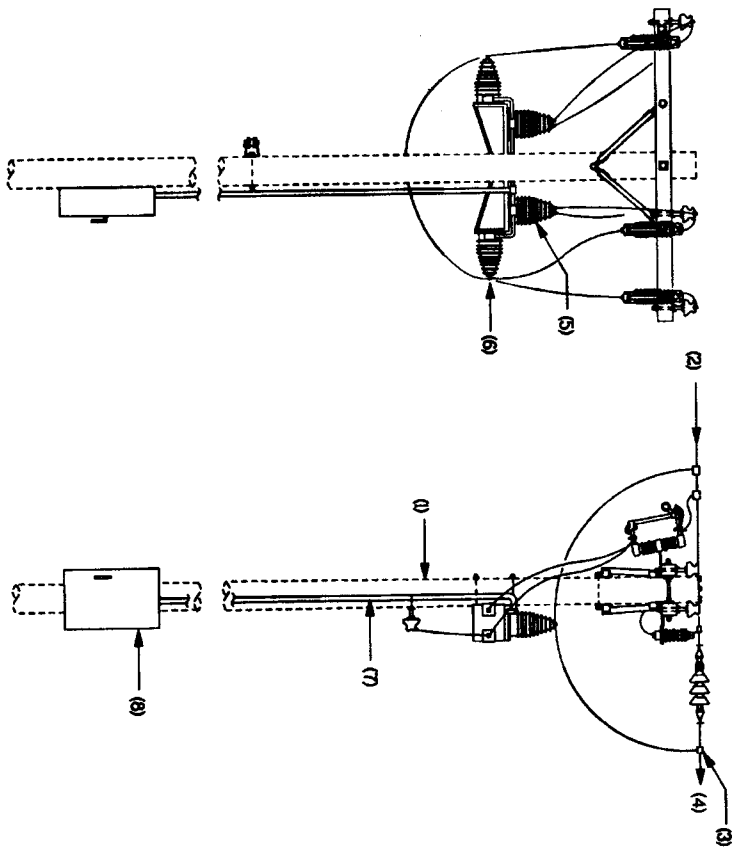


- (1) UTILITY'S POLE
- (2) W.E.D. SERVICE WIRES
- (3) CUSTOMER'S ATTACHMENT POINT
- (4) CONNECTION POINT - CUSTOMER TO UTILITY
- (5) CUSTOMER'S WIRE AND CONDUIT
- (6) W.E.D. METER
- (7) CUSTOMER'S METER SOCKET
- (8) CUSTOMER'S MAIN DISCONNECT (IF REQUIRED)
- (9) CUSTOMER'S WIRE AND CONDUIT


REVISION -
 NEW DATE: _____
 NEW DRAWN BY: _____
 WALLINGFORD ELECTRIC DIVISION
 DEPARTMENT OF PUBLIC UTILITIES
 120 JOHN STREET
 WALLINGFORD, CONNECTICUT 06493

TITLE:
RESIDENTIAL O/H SERVICE
INDUSTRIAL/COMMERCIAL O/H SERVICE
DIRECT METERING


DRAWING NO:
OH 001



- 0) UTILITY POLE
- 1) UTILITY LINES AND EQUIPMENT
- 2) CONNECTION POINT, CUSTOMER TO UTILITY
- 3) CUSTOMER'S POLE LINE, POLES, WIRE, EQUIPMENT, TRANSFORMERS, ETC.
- 4) UTILITY CURRENT TRANSFORMERS (CT)
- 5) UTILITY POTENTIAL TRANSFORMERS (PT)
- 6) UTILITY SECONDARY METERING CONDUIT
- 7) UTILITY METER ENCLOSURE

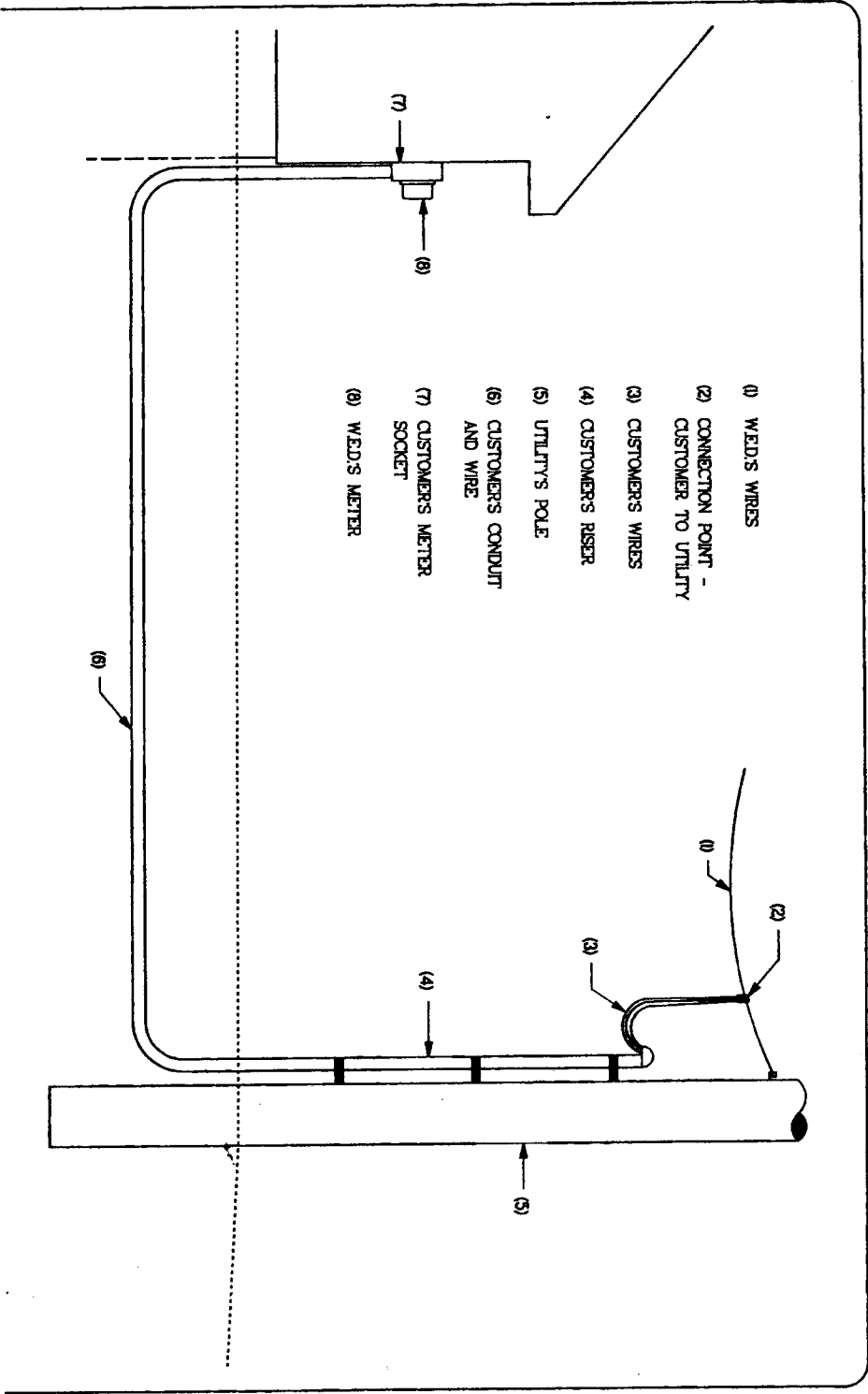
REVISION #	REV DATE
REV 001 BY	REV 001 BY
	
WALLINGFORD ELECTRIC DIVISION DEPARTMENT OF PUBLIC UTILITIES 100 JOHN STREET WALLINGFORD, CONNECTICUT 06492	

TITLE:	DRAWING NO:
INDUSTRIAL/COMMERCIAL O/H PRIMARY SERVICE WITH PRIMARY METERING	OH 002

	WALLINGFORD ELECTRIC DIVISION DEPARTMENT OF PUBLIC UTILITIES 100 O/H STREET WALLINGFORD, CONNECTICUT 06493
REVISION # REV. DATE REV. BY	REV. DATE REV. BY

TITLE: RESIDENTIAL U/G SERVICE FROM O/H FACILITIES INDUSTRIAL/COMMERCIAL U/G SERVICE FROM O/H FACILITIES

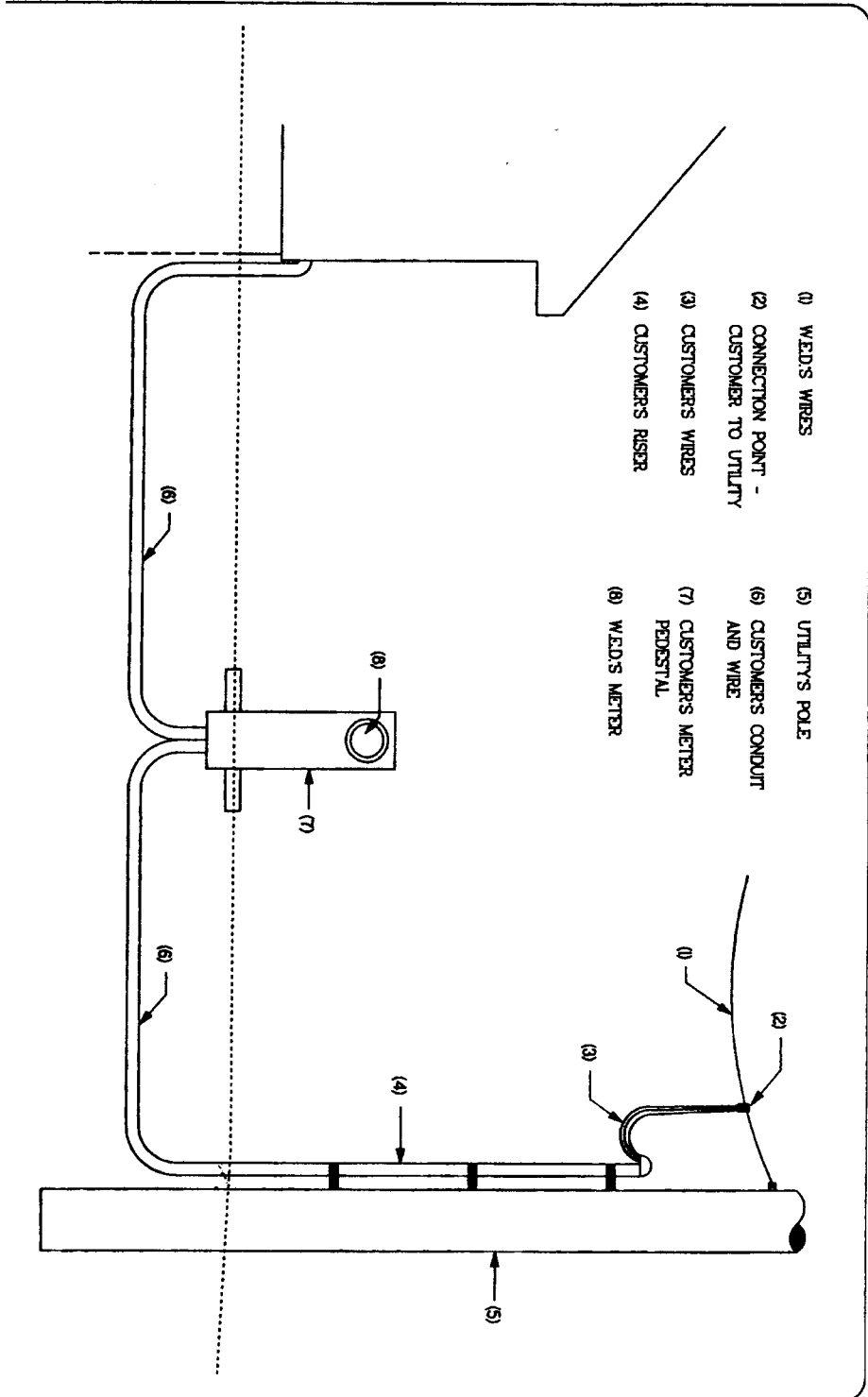
DRAWING NO. UG 001



REVISION # _____ REV DATE _____
 REV DATE _____ REV DATE _____
 WALLINGFORD ELECTRIC DIVISION
 DEPARTMENT OF PUBLIC UTILITIES
 100 JOHN STREET
 WALLINGFORD, CONNECTICUT 06495

TITLE
**RESIDENTIAL U/G SERVICE
 FROM O/H FACILITIES
 FREE STANDING METER PEDESTAL**

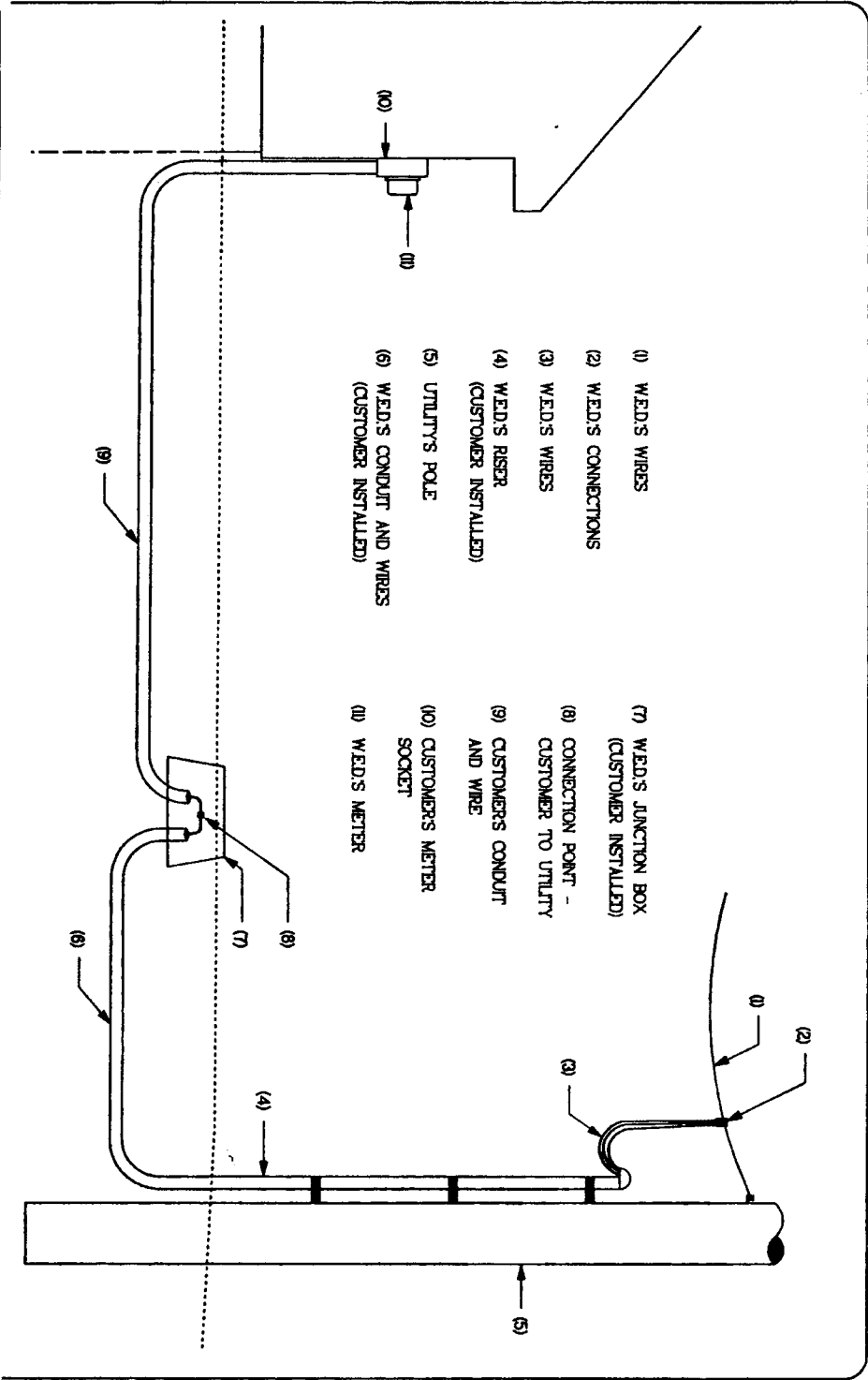
DRAWING NO.
UG 002




REVISION # _____ REV DATE _____
 WALLINGFORD ELECTRIC DIVISION
 DEPARTMENT OF PUBLIC UTILITIES
 100 JOHN STREET
 WALLINGFORD, CONNECTICUT 06492

TITLE:
**RESIDENTIAL U/G SERVICE
 FROM O/H FACILITIES
 VIA JUNCTION BOX**

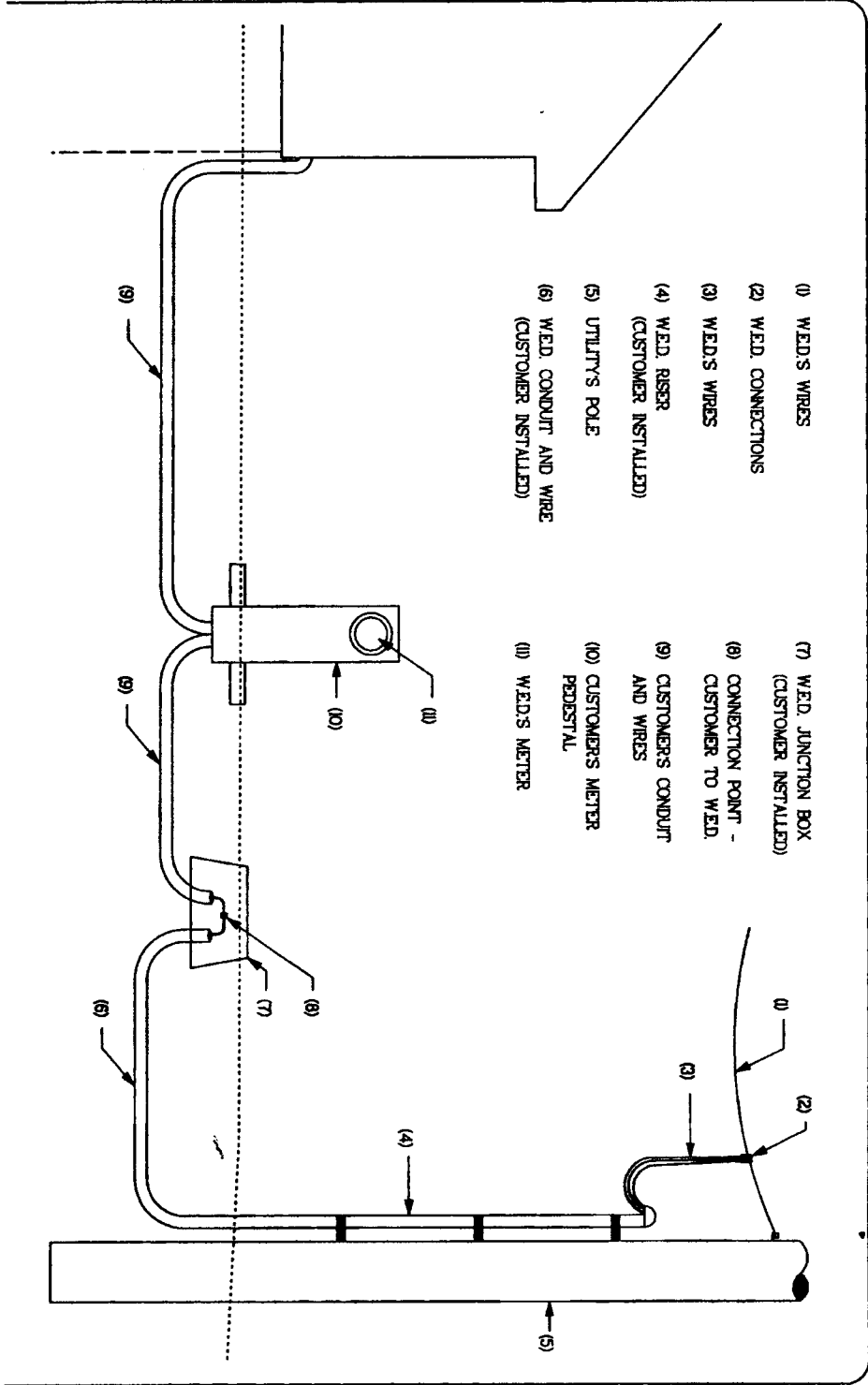
DRAWING NO:
UG 003




REVISION # _____
 REV. DATE: _____
 REV. BY: _____

 WALLINGFORD ELECTRIC DIVISION
 DEPARTMENT OF PUBLIC UTILITIES
 100 MAIN STREET
 WALLINGFORD, CONNECTICUT 06495

TITLE:
**RESIDENTIAL U/G SERVICE
 FROM O/H FACILITIES
 FREE STANDING METER PEDESTAL
 VIA JUNCTION BOX**

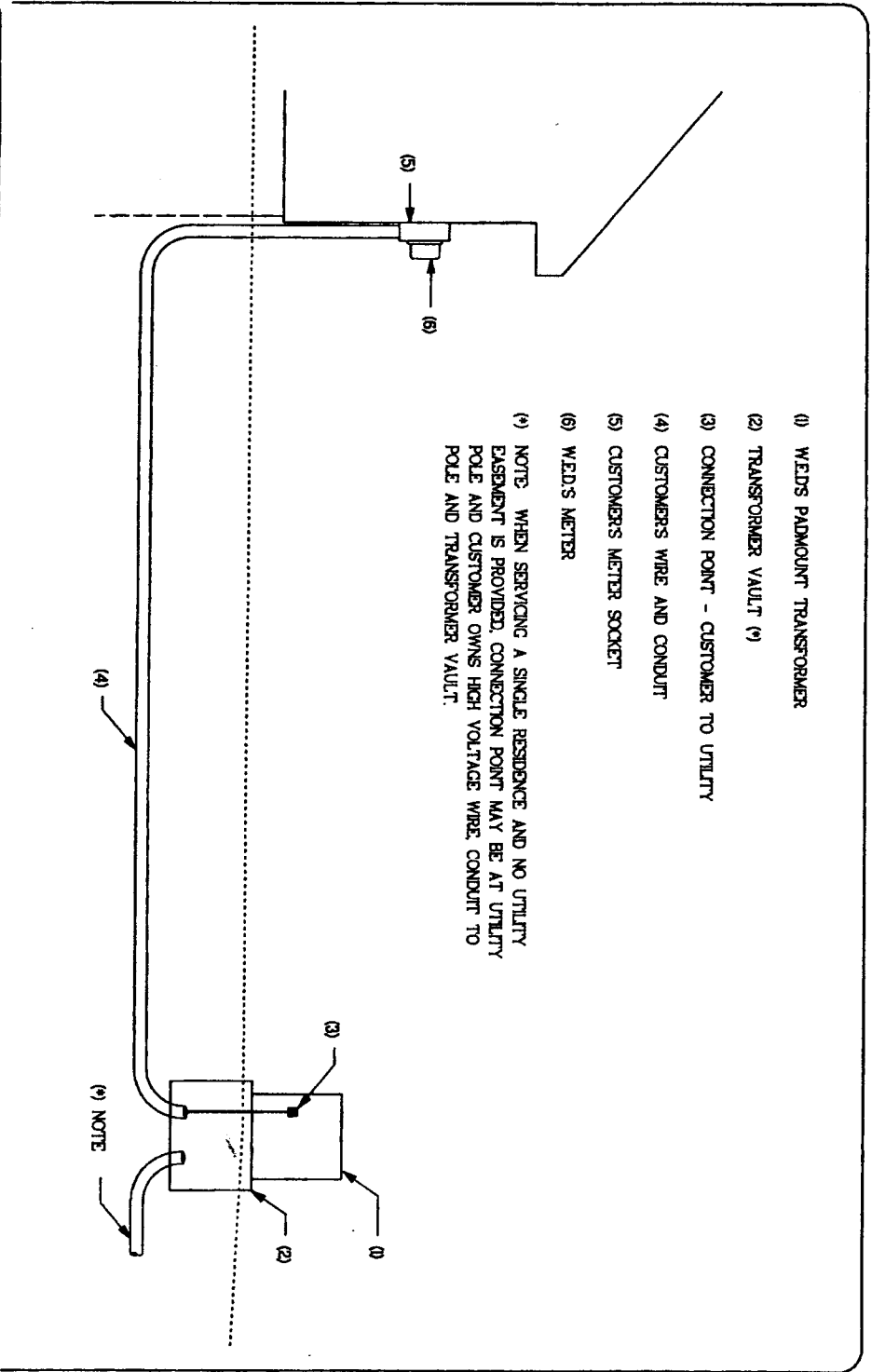
DRAWING NO:
UG 004



 <p> WALLINGFORD ELECTRIC DIVISION DEPARTMENT OF PUBLIC UTILITIES 100 JOHN STREET WALLINGFORD, CONNECTICUT 06492 </p>	REVISION # _____ NEW DATE _____ NEW DRAWING DATE _____
--	--

TITLE:
**RESIDENTIAL U/G SERVICE
 FROM U/G EQUIPMENT
 NOT IN A U.R.D. SUBDIVISION**

DRAWING NO.
UG 005

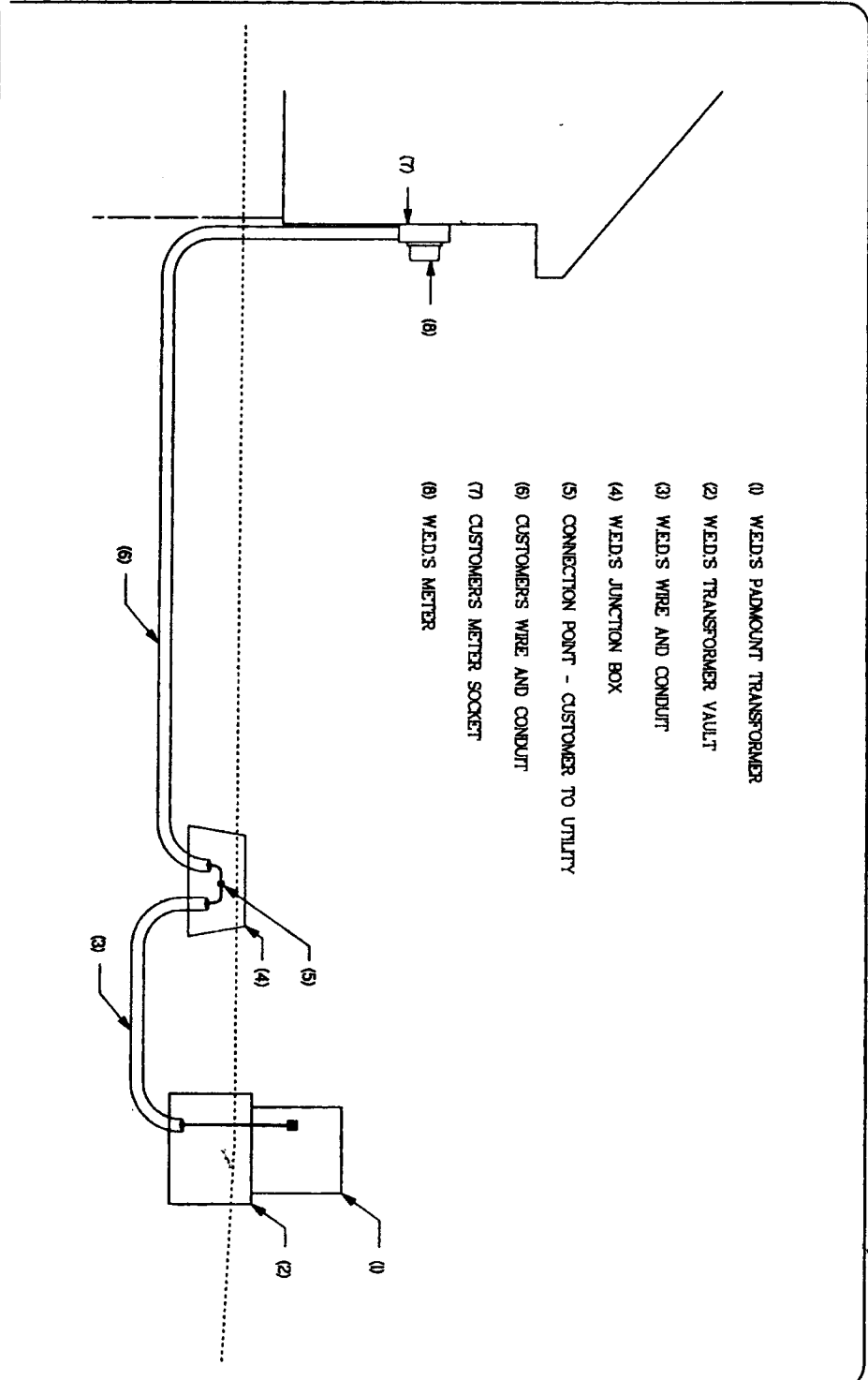


- (1) WELDS PADMOUNT TRANSFORMER
- (2) TRANSFORMER VAULT (9)
- (3) CONNECTION POINT - CUSTOMER TO UTILITY
- (4) CUSTOMER'S WIRE AND CONDUIT
- (5) CUSTOMER'S METER SOCKET
- (6) WELDS METER
- (9) NOTE: WHEN SERVICING A SINGLE RESIDENCE AND NO UTILITY EASEMENT IS PROVIDED, CONNECTION POINT MAY BE AT UTILITY POLE AND CUSTOMER OWNS HIGH VOLTAGE WIRE, CONDUIT TO POLE AND TRANSFORMER VAULT.


REVISION -
 REV DATE: REV DATE: REV DATE:
 WALLINGFORD ELECTRIC DIVISION
 DEPARTMENT OF PUBLIC UTILITIES
 100 JOHN STREET
 WALLINGFORD, CONNECTICUT 06495

TITLE:
**RESIDENTIAL U/G SERVICE
 FROM U/G EQUIPMENT
 VIA JUNCTION BOX
 NOT IN A U.R. D. SUBDIVISION**

DRAWING NO.
UG 006



- (1) WED'S PADMOUNT TRANSFORMER
- (2) WED'S TRANSFORMER VAULT
- (3) WED'S WIRE AND CONDUIT
- (4) WED'S JUNCTION BOX
- (5) CONNECTION POINT - CUSTOMER TO UTILITY
- (6) CUSTOMERS WIRE AND CONDUIT
- (7) CUSTOMERS METER SOCKET
- (8) WED'S METER

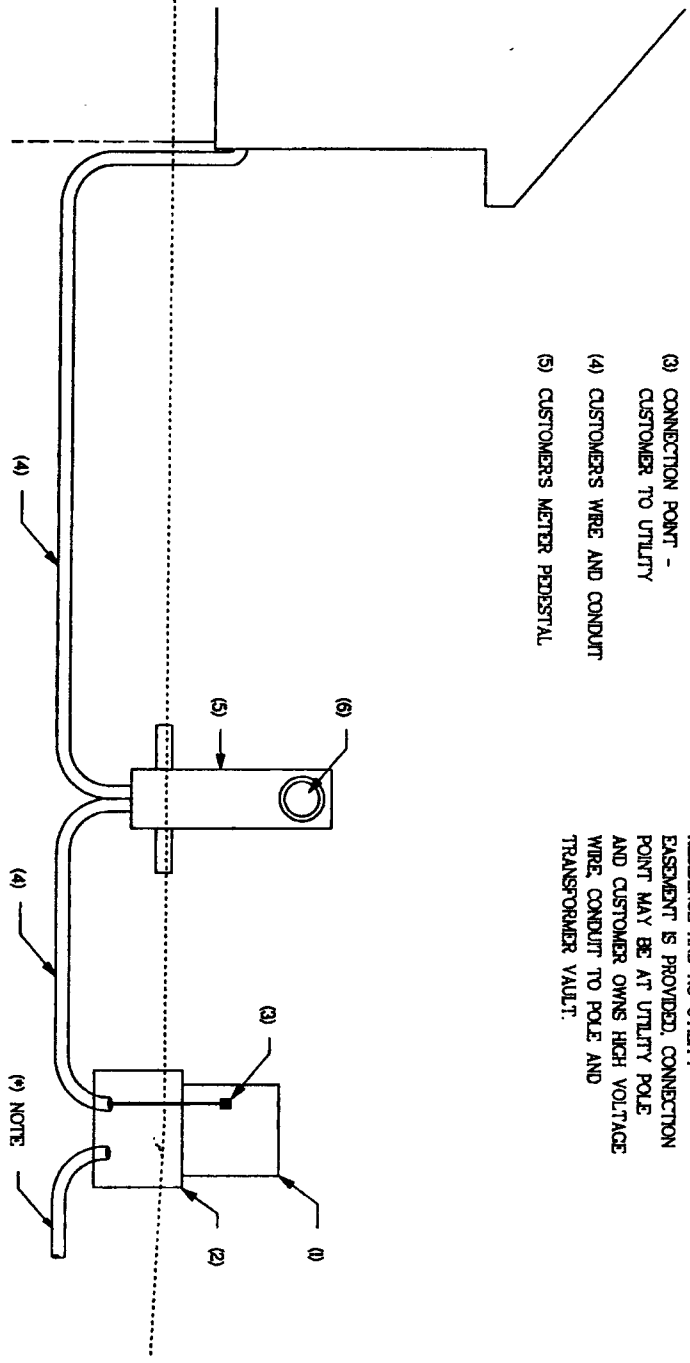
REVISION #	REV DATE
REV 001 BY	REV APR 0 81
 WALLINGFORD ELECTRIC DIVISION DEPARTMENT OF PUBLIC UTILITIES 100 JOHN STREET WALLINGFORD, CONNECTICUT 06493	

TITLE:

**RESIDENTIAL U/G SERVICE
FROM U/G EQUIPMENT
FREE STANDING METER PEDESTAL**

DRAWING NO:


UG 007



- (1) WED'S PADMOUNT TRANSFORMER
- (2) TRANSFORMER VAULT (*)
- (3) CONNECTION POINT - CUSTOMER TO UTILITY
- (4) CUSTOMERS WIRE AND CONDUIT
- (5) CUSTOMERS METER PEDESTAL

- (6) WED'S METER
- (*) NOTE: WHEN SERVING A SINGLE RESIDENCE AND NO UTILITY EASEMENT IS PROVIDED, CONNECTION POINT MAY BE AT UTILITY POLE AND CUSTOMER OWNS HIGH VOLTAGE WIRE, CONDUIT TO POLE AND TRANSFORMER VAULT.

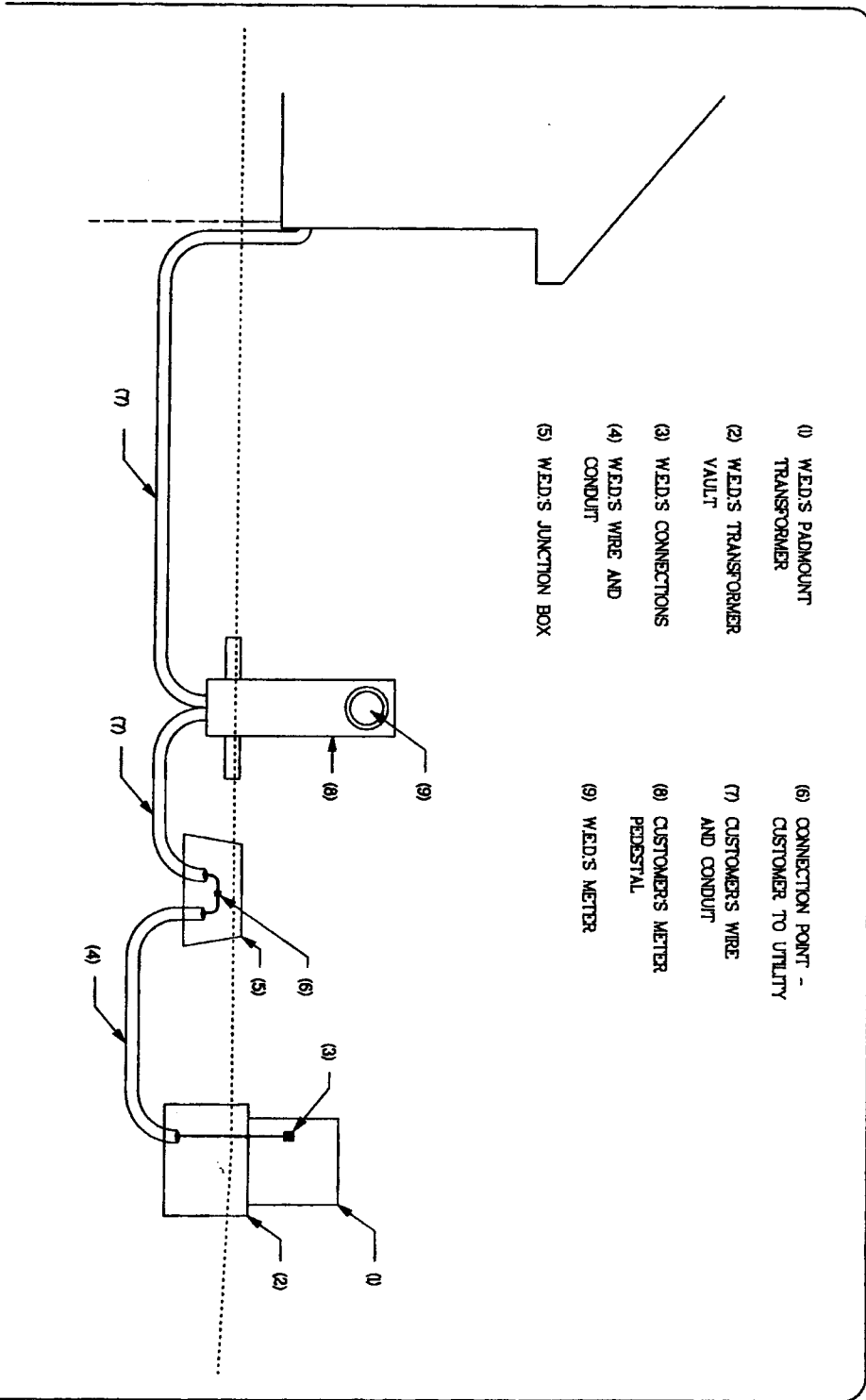
REVISED BY: REV DATE: REV APP'D BY:


 WALLINGFORD ELECTRIC DIVISION
 DEPARTMENT OF PUBLIC UTILITIES
 100 JOHN STREET
 WALLINGFORD, CONNECTICUT 06495

TITLE:

**RESIDENTIAL U/G SERVICE
 FROM U/G EQUIPMENT
 FREE STANDING METER PEDESTAL
 VIA JUNCTION BOX**

DRAWING NO:
UG 008



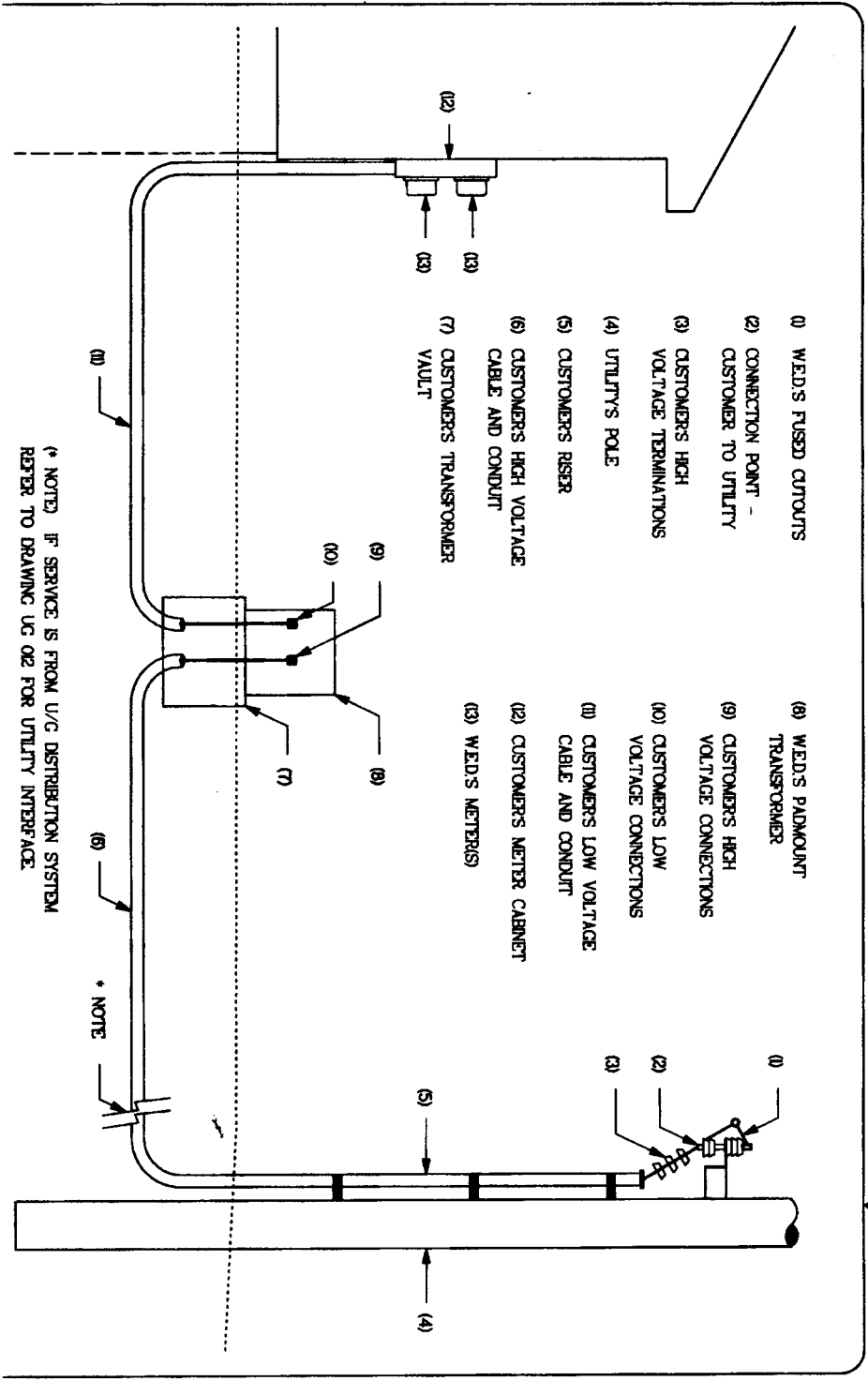
- (1) W.E.D.S. PADMOUNT TRANSFORMER
- (2) W.E.D.S. TRANSFORMER VAULT
- (3) W.E.D.S. CONNECTIONS
- (4) W.E.D.S. WIRE AND CONDUIT
- (5) W.E.D.S. JUNCTION BOX
- (6) CONNECTION POINT - CUSTOMER TO UTILITY
- (7) CUSTOMER'S WIRE AND CONDUIT
- (8) CUSTOMER'S METER PEDESTAL
- (9) W.E.D.S. METER

REVISION =
 REV. DATE: REV. BY:

WALLINGFORD ELECTRIC DIVISION
 DEPARTMENT OF PUBLIC UTILITIES
 100 JOHN STREET
 WALLINGFORD, CONNECTICUT 06495

TITLE:
INDUSTRIAL/COMMERCIAL U/G SERVICE
FROM O/H FACILITIES
VIA PADMOUNT TRANSFORMER
SINGLE OR MULTI-UNIT SECONDARY METERING

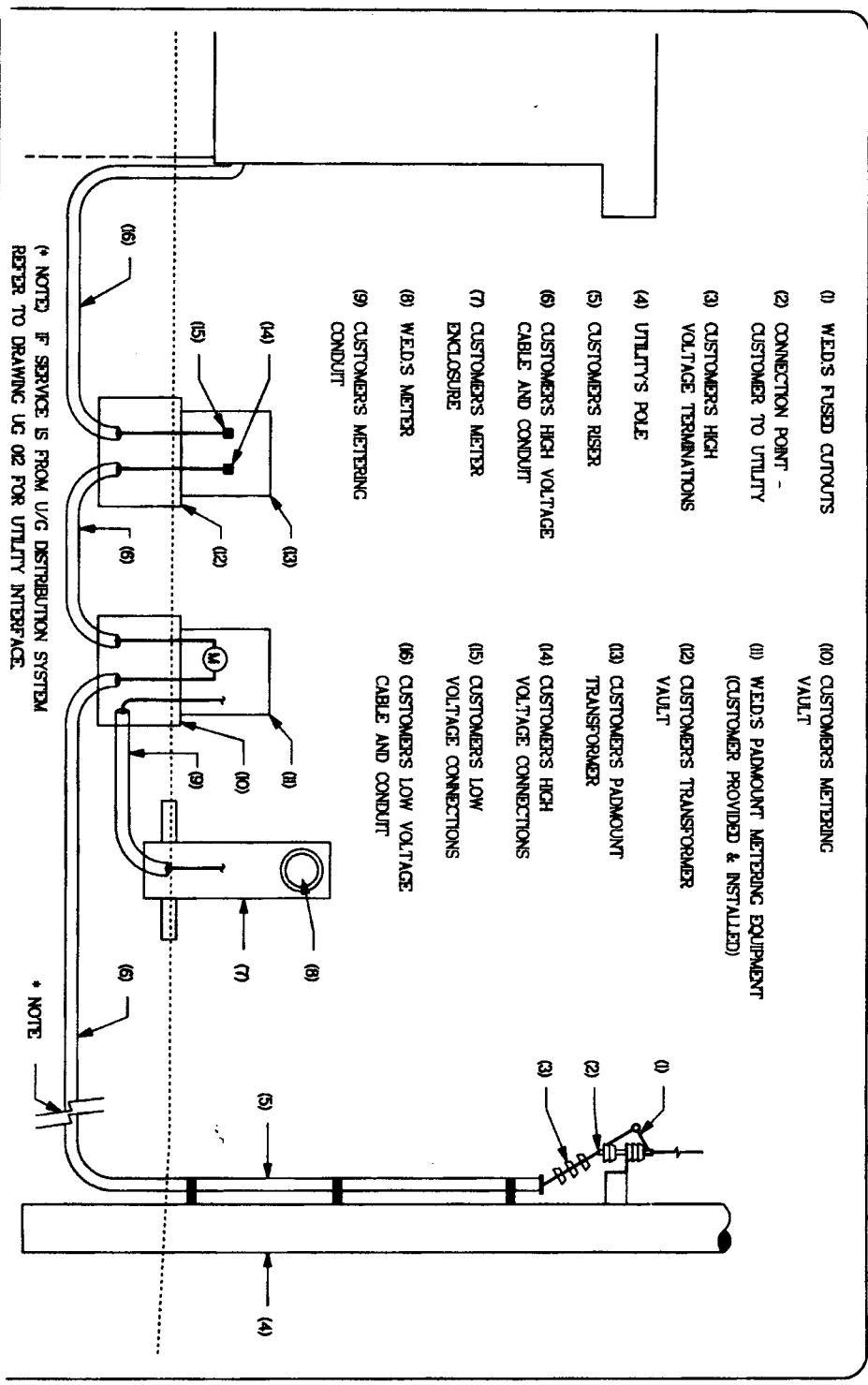
DRAWING NO:
UG 009




DIVISION: WALLINGFORD ELECTRIC DIVISION
 DEPARTMENT OF PUBLIC UTILITIES
 100 JOHN STREET
 WALLINGFORD, CONNECTICUT 06495
 REV DATE: REV APR 10 87
 REV DESIGNED BY:

TITLE: INDUSTRIAL/COMMERCIAL U/G SERVICE
 FROM O/H FACILITIES
 PADMOUNTED PRIMARY METERED

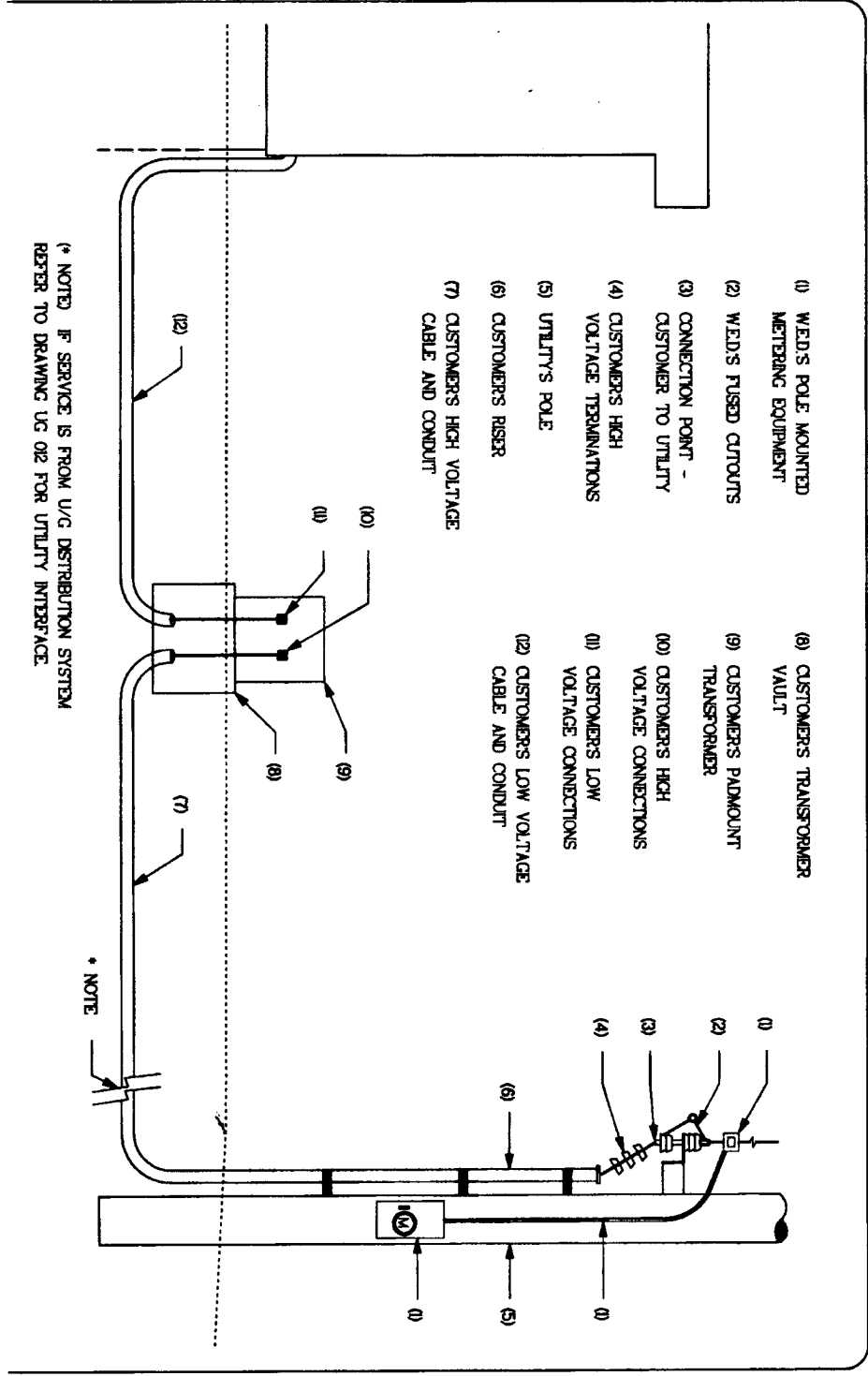
DRAWING NO: UG 010



REVISION #	REV DATE
REV 001 01/81	REV 001 01/81
 WALLINGFORD ELECTRIC DIVISION DEPARTMENT OF PUBLIC UTILITIES 100 JOHN STREET WALLINGFORD, CONNECTICUT 06492	

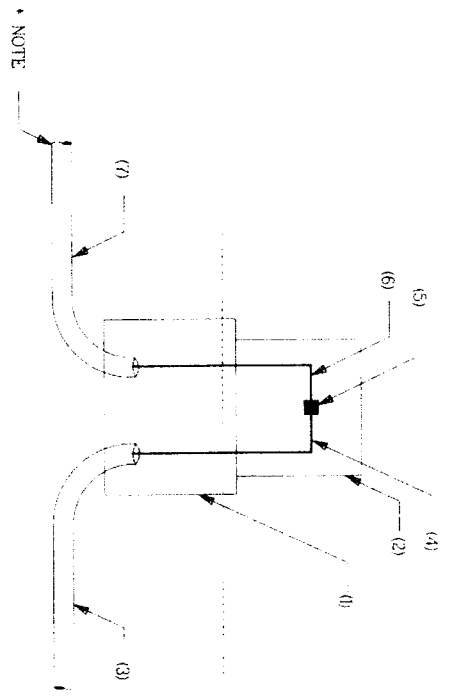
TITLE:
**INDUSTRIAL/COMMERCIAL U/G SERVICE
 FROM O/H FACILITIES
 POLE MOUNTED PRIMARY METER**


DRAWING NO:
UG 011



- (1) WED MANHOLE, VAULT, SPJCE BOX, OR JUNCTION PEDESTAL
- (2) WED SWITCH SPJCE CABINET, OR JUNCTION PEDESTAL
MAY BE PADMOUNTED OR FLUSH TO GRADE/SUBSURFACE
- (3) WED CONDUIT SYSTEM
- (4) WED HIGH VOLTAGE WIRE AND TERMINATIONS
- (5) CONNECTION POINT, CUSTOMER TO UTILITY
- (6) CUSTOMERS HIGH VOLTAGE WIRE AND TERMINATIONS
CABLE AND CONDUIT
- (7) CUSTOMERS CONDUIT SYSTEM

(*) NOTE) REFER TO DRAWINGS UG 009 UG 010,
OR UG 011 FOR REMAINDER OF SERVICE DETAILS



	REV. DATE REV. DATE REV. DATE
MAINTENANCE ELECTRIC DIVISION DEPARTMENT OF AIR & WATER POLLUTION CONTROL 100 CONN STREET BALTIMORE, MARYLAND 21201	TITLE DRAWING NO.

INDUSTRIAL/COMMERCIAL U/G SERVICE
FROM U/G DISTRIBUTION FACILITIES

UG 012